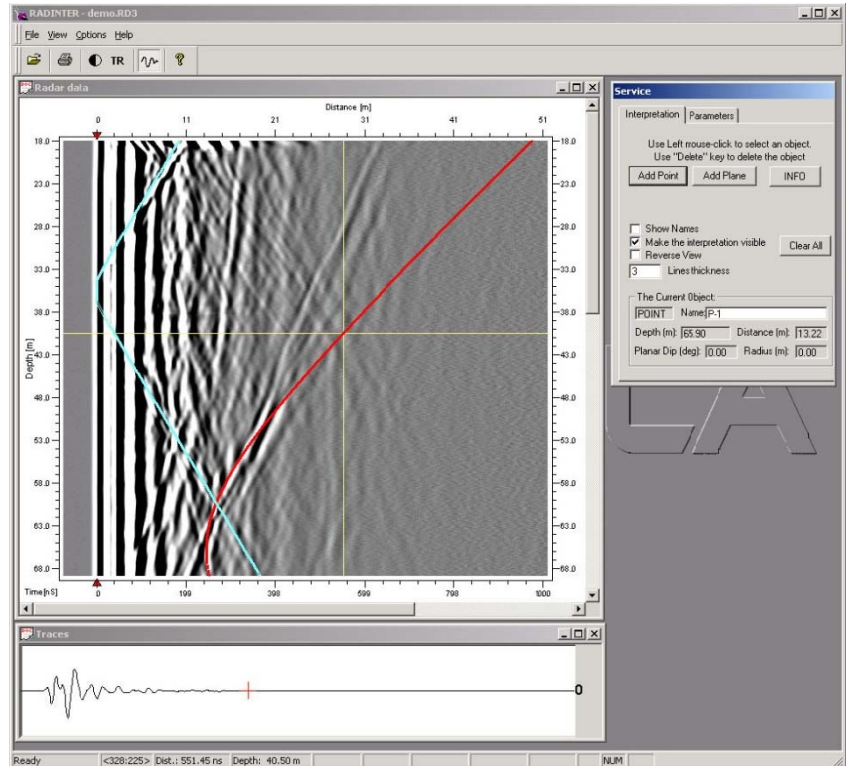


RadInter™ Borehole Radar Reflection Program

RadInter is an interpretation software developed for the Ramac GPR/BH single hole reflection data. RadInter allows comparison of measured borehole radar data with theoretically calculated reflection patterns from point-like and plane-like reflectors. The Interpreted reflecting targets can be saved on text files for later use.

Point-like reflectors are determined by the depth along the borehole to the point in the borehole closest to the reflector and the distance from this point to the reflector.

Plane-like reflectors are determined by the depth along the borehole to the intersection point with the reflecting plane, and the distance between the plane and the borehole.



System requirements

- Windows 95, 98, 2000 or NT
- 100MHz Pentium processor
- 32MB of RAM
- 30MB free hard disk space
- 800x600 screen resolution
- ECP parallel port (IEEE1284) for optimal data acquisition performance