



THE CX10 & CX11 NON-DESTRUCTIVE CONCRETE IMAGING SYSTEM



CONCRETE IMAGING SYSTEM FOR THE LOCATION OF REBAR, POST TENSION CABLES, CONDUITS AND 50/60HZ POWER CABLES

The CX series is the world's first system to combine Radar and Electro-Magnetic (EM) technology to locate and identify energized power cables. The system is available with two different antennas: 1.2 & 1.6GHz and both are available with the EM option.

- Detects metal and non-metallic objects
- Locates and identifies 50/60Hz power cables
- Fast and Easy to use
- Detect voids
- Approx 50% of the cost of competing products
- Unique single knob control

Let's make it visible



TECHNICAL SPECIFICATIONS

The system includes a field rugged all metal controller and high impact glass monitor. Operation of the CX series system is extremely productive with its unique single knob controller and simple user interface, in addition is an easy-to-follow project manager for 3D imaging. Data may be downloaded to a PC for more advanced post-processing with the Easy 3D processing software or to simply archive data via a fast USB port.

The CX10 & CX11 systems can now locate power cables, rebar, post-tension cables plus metallic and non-metallic conduits in concrete slabs either suspended or on grade.

Features include the ability to rapidly scan areas for 2D locating and to mark targets or collect data on a grid mat supplied with the system, for "in the box" 3D imaging in the field for instantaneous results.



Figure 1. The system includes a field rugged all metal controller and high impact glass monitor.

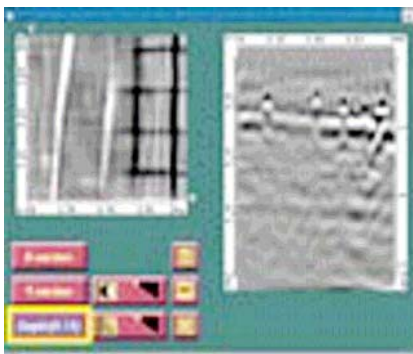


Figure 2. Section of a rein-forced concrete slab viewed with the inbuilt 2.5D utility.

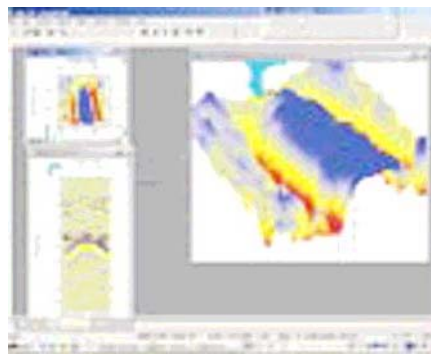


Figure 3. Example of 1.6 GHz data presented in Easy 3D™

